



NBS Technologies LAMINATOR

ADD SECURITY TO YOUR CARDS

1. Product Introduction



NBS Technologies Laminator :

Affordable Card Laminator for Durable and Secured Card Use

- Protect your information from being counterfeited, duplicated and tampered with
- Maximize the durability of a card
- Expand the life time of a card up to 5-10 years

Product feature :

- ① Simultaneous Dual Sided Laminating
- ② Faster laminating speed and short warm up time
 - Warming up time : Max 40 sec
 - Dual sided laminating : approx 20 sec
- ③ Easy to USE
 - Menu control on LCD
 - Easy loading cartridges
 - Card Jam -Knob



2. Product Line-up

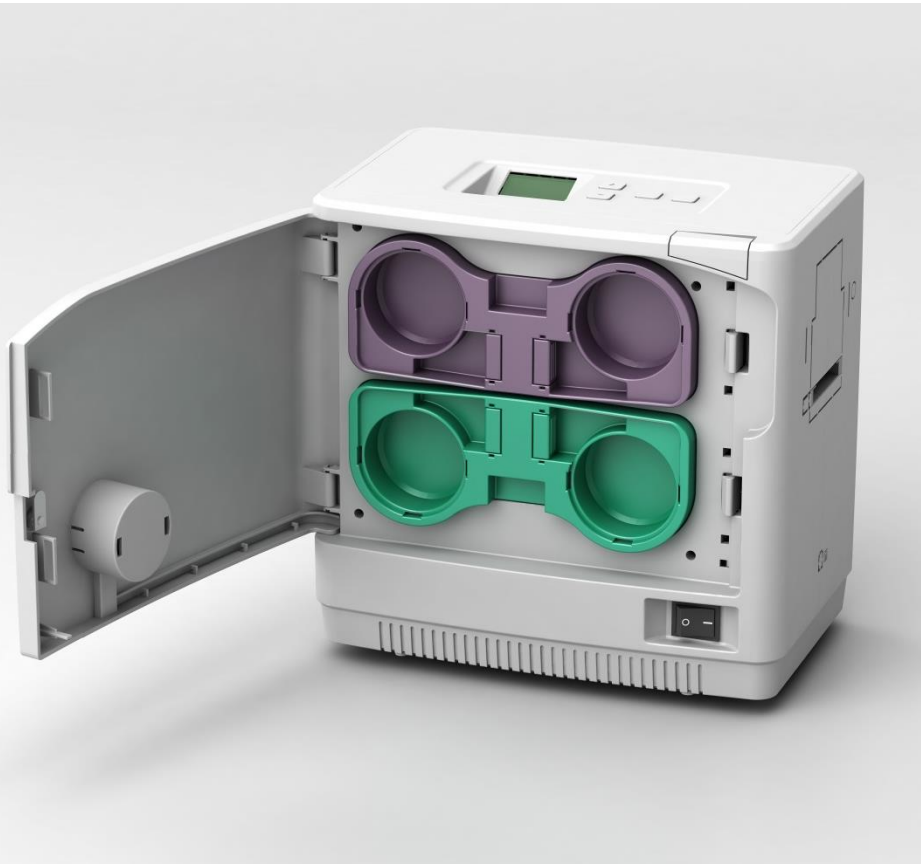
2-1. Stand Alone



2. Product Line-up

2-1. Stand Alone :

- LAMINATOR SINGLE CARTRIDGE + HOPPER (optional)



2. Product Line Up

2-1. Stand Alone : Single Sided Laminator

■ LAMINATOR SINGLE CARTRIDGE + HOPPER (optional)



2. Product Line Up

2-1. Stand Alone : Dual Sided Laminator

■ LAMINATOR DUAL CARTRIDGE + HOPPER (optional)



2. Product Line up

2-2. Laminator + Card Printer (Direct Thermal)

■ A. LAMINATOR + DNA Pro (SINGLE HOPPER) + WITH PLINTH UPPER CARTRIDGE



2. Product Line-Up

2-2. Laminator + Card Printer (Direct Thermal)

- B. LAMINATOR + DNA Pro (DUAL HOPPER) + WITH PLINTH UPPER CARTRIDGE



2. Product Line-up

2-2. Laminator + Card Printer (Direct Thermal)

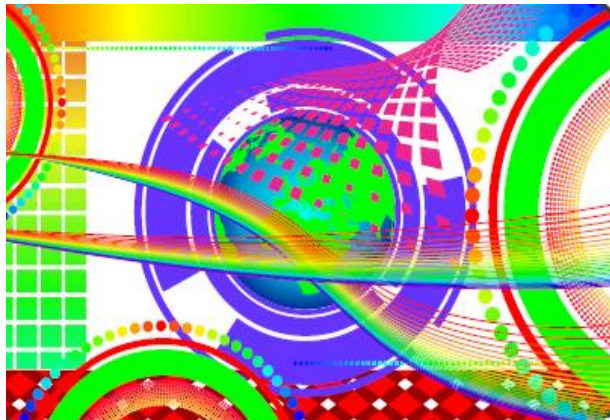
- C. LAMINATOR + DNA Pro (DUAL HOPPER) + WITH PLINTH
DUAL CARTRIDGE



3. Consumable

Lamination Film:

- ① Clear & Holographic Patch
 - Clear (1.0mil) ; 500 cards/roll
 - Registered Hologram (1.0 mil) ; 500 cards/roll



- ② Clear & Holographic Varnish



4. Product Specification



Product Specifications

Standard Features

▶Laminating Technology

- : Single -, Dual- Sided Laminating
(Simultaneous Dual-Sided)
- : Heating Roller

▶Laminating Speed

- : 20 sec/ card (Single or Dual)

▶Laminating Temperature

- : 120°C to 195°C

▶Laminating Warm-Up Time

- : 40 sec (120 °C)

▶Card Specification

- : Card type : ISO 7810 format, CR-80 & CR-79 Size
- : 85.6 x 53.98 mm (3.370" x 2.125")
- : Card Thickness : 0.76mm~1.0mm (30mil~40mil)
- : PVC, Composite PVC

▶Card Feeding Type

- : Manual Feeding (Standard)
- : 100- card input hopper (0.76mm, 30 mil) (Optional)

▶Interface

- : USB 2.0 , RS232C

4. Product Specification



▶ Electronic Features

- : Requirement : Input // AC 100V~240V, Output // DC 24V
- : Consumption : S// 600W, D// 600W (DC 24V, AC 220 V)

▶ Operating Environment

- : Min/Max Operating Temperature (15°C~30°C)
- : Humidity : 20% to 65% non-condensing
- : Min/Max Storage Temperature (-5 °C~70 °C)
- : Storage Humidity : 20% to 70% non-condensing

▶ Laminator Dimension (no hopper/no stacker)

- : 323mm(W) X 214m(L) X 314mm(H)
- : Weight : 9.6Kg

▶ Laminator Certification

- : CE, FCC, UL
- : CCC, VCCI, KCC will be acquired
- : RoHS

Optional Feature

- ▶ Card Hopper for Auto Card Feeding : 100 cards hopper
- ▶ Output Card Stacker : 150 cards capacity
- ▶ Security feature : Kensington physical lock slot (default), Enclosure Lock (optional)
- ▶ Add on Kit for DNA printer

Packing information

Packaging Content

- : Laminator
- : Quick Guide & User Manual
- : USB Power Cable
- : Power cord
- : Starter Cleaning Kit (Cleaning roller 1 ea, Cleaning Card 1 ea)

Physical Package

- : Carton Size
- : N' Weight
- : G' Weight
- : Palletization
 - Quantity on a pallet
 - Physical Dimension

